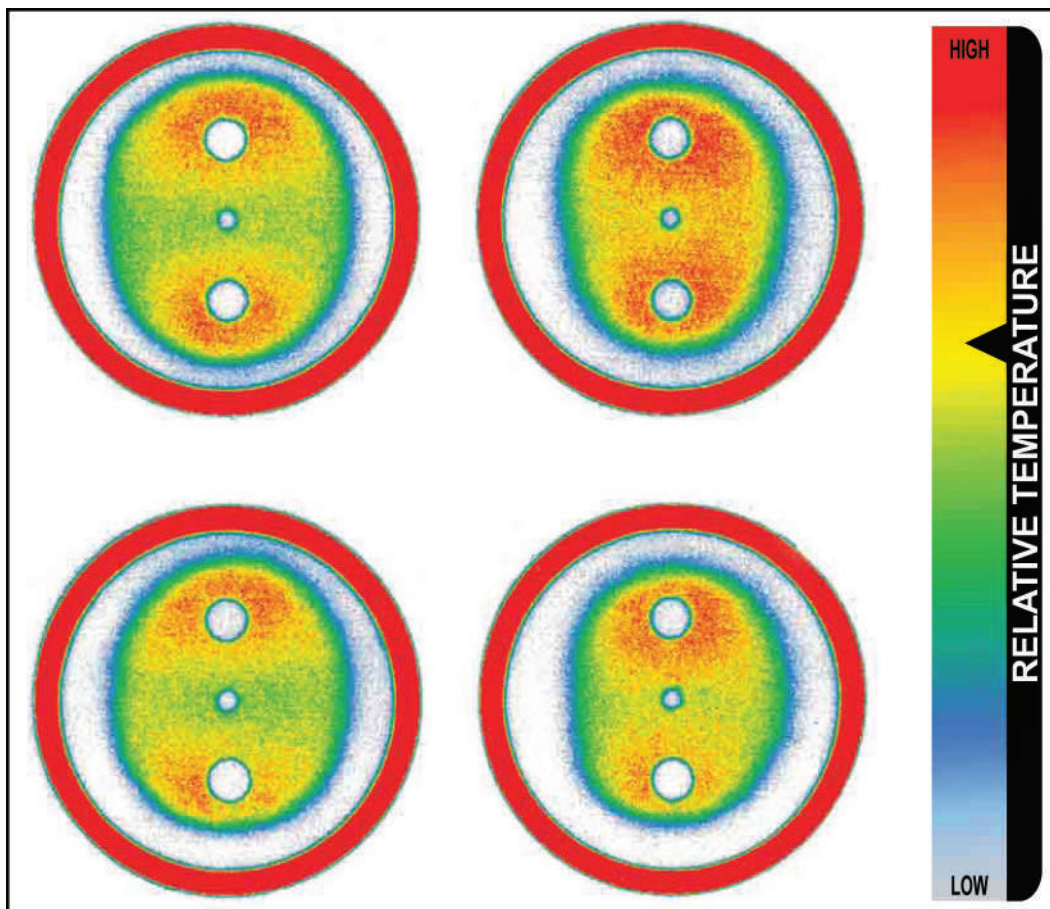


Thermex Sensor Film

As thermal management is critical to more applications, there is a growing need for Thermex® temperature distribution film. Thermex® is an economical thin film that can be used in virtually any application to test and monitor heated contacting surfaces from 200° to 300°F (93° to 149°C). It can be used alone or in conjunction with Fuji Prescale® pressure indicating sensor film.

Upon exposure to heat, Thermex® changes color instantaneously and permanently to reveal temperature distribution between any two contacting surfaces. The intensity of this color change directly relates to the temperature it was exposed to enabling Thermex® to reveal spot high or low temperature zones and minute surface variations. Invasive intolerant environments and interfaces that aren't easily accessed with traditional temperature indicators and infrared thermometers are among candidates for Thermex®.

Post processing analysis of Thermex® is available for temperature fluctuations that need to be analyzed with great precision.



Thermex® temperature distribution paper enhanced by Topaq® Analysis