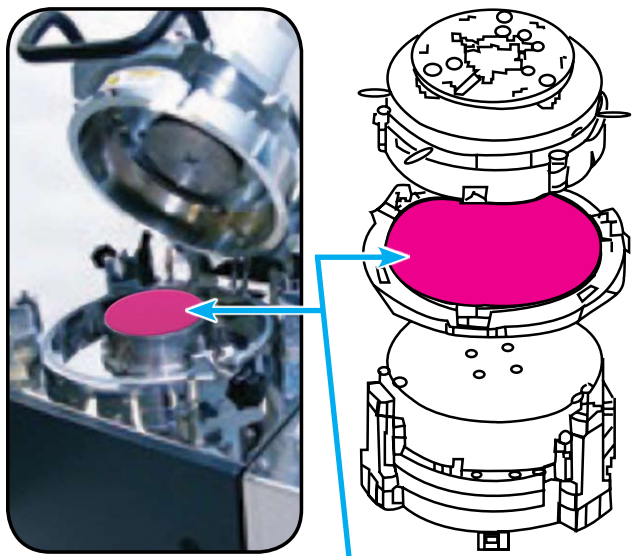


How Fujifilm Prescale® is Used

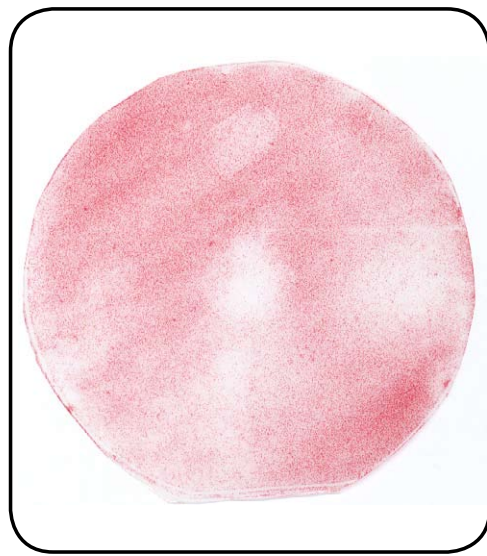
Wafer Bonding

1 Place a sheet of Fujifilm Prescale® pressure indicating film directly on the compression elements of your bonding press.

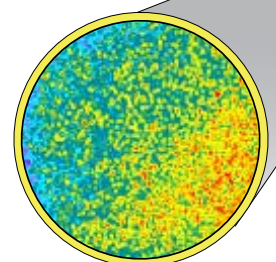
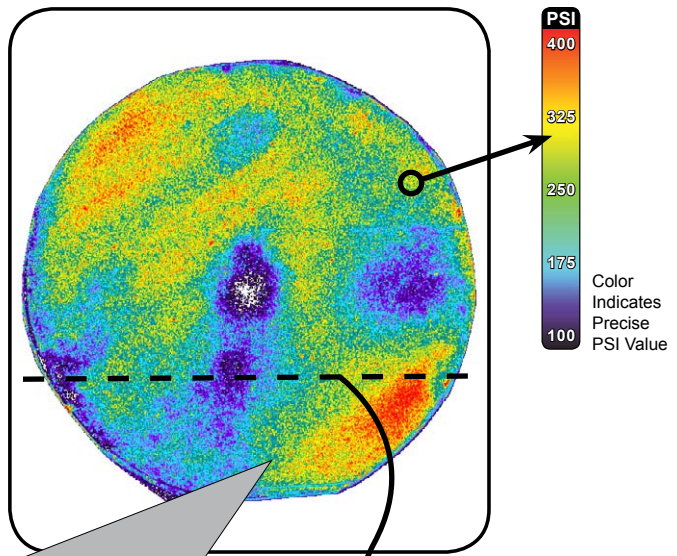


Place Fujifilm Prescale® tactile surface sensor here

2 Instantaneously and permanently the film captures both the pressure distribution and magnitude that occurs between the contacting surfaces.



3 Final analysis: a "pressure map"



Zoomed View

