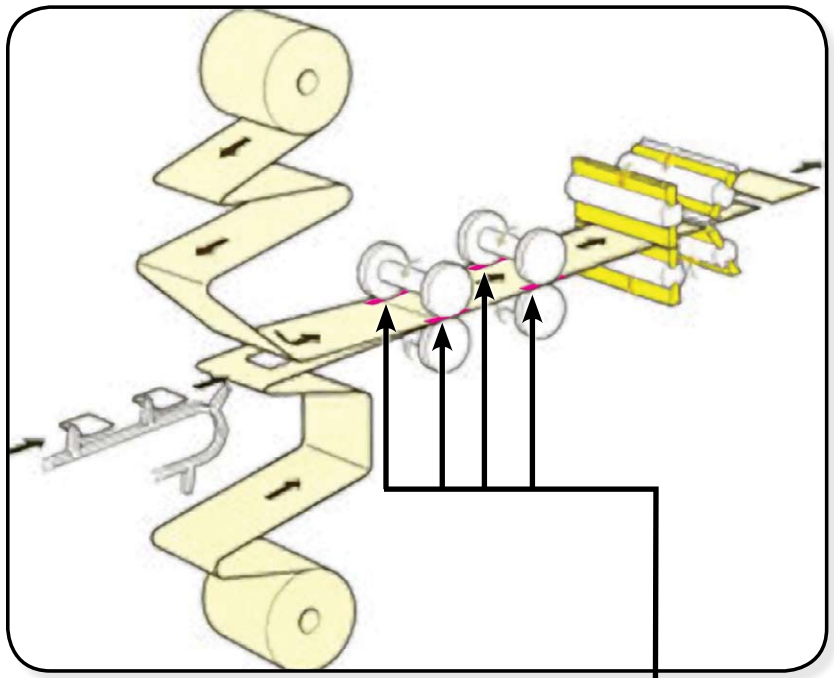


How Fujifilm Prescale® is Used

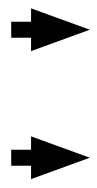
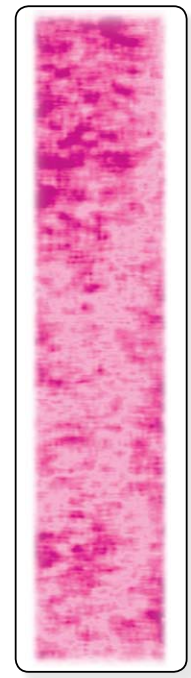
Rotary Heat Sealer

- 1 Place a sheet of Fujifilm Prescale® pressure indicating film directly in between the clamping elements of your sealing platens.

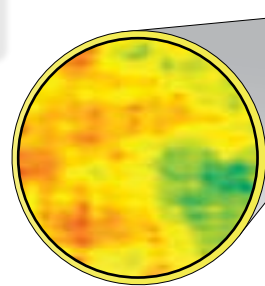
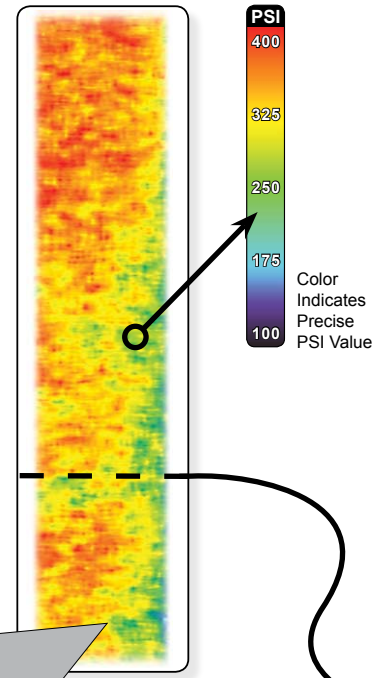


Place Fujifilm Prescale® tactile surface sensors here

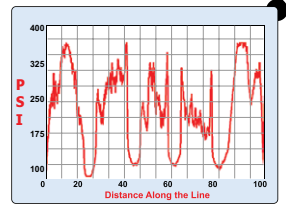
- 2 Instantaneously and permanently the film captures both the pressure distribution and magnitude that occurs between the contacting surfaces.



- 3 Final analysis: a "pressure map"



Zoomed View



Pressure Profile