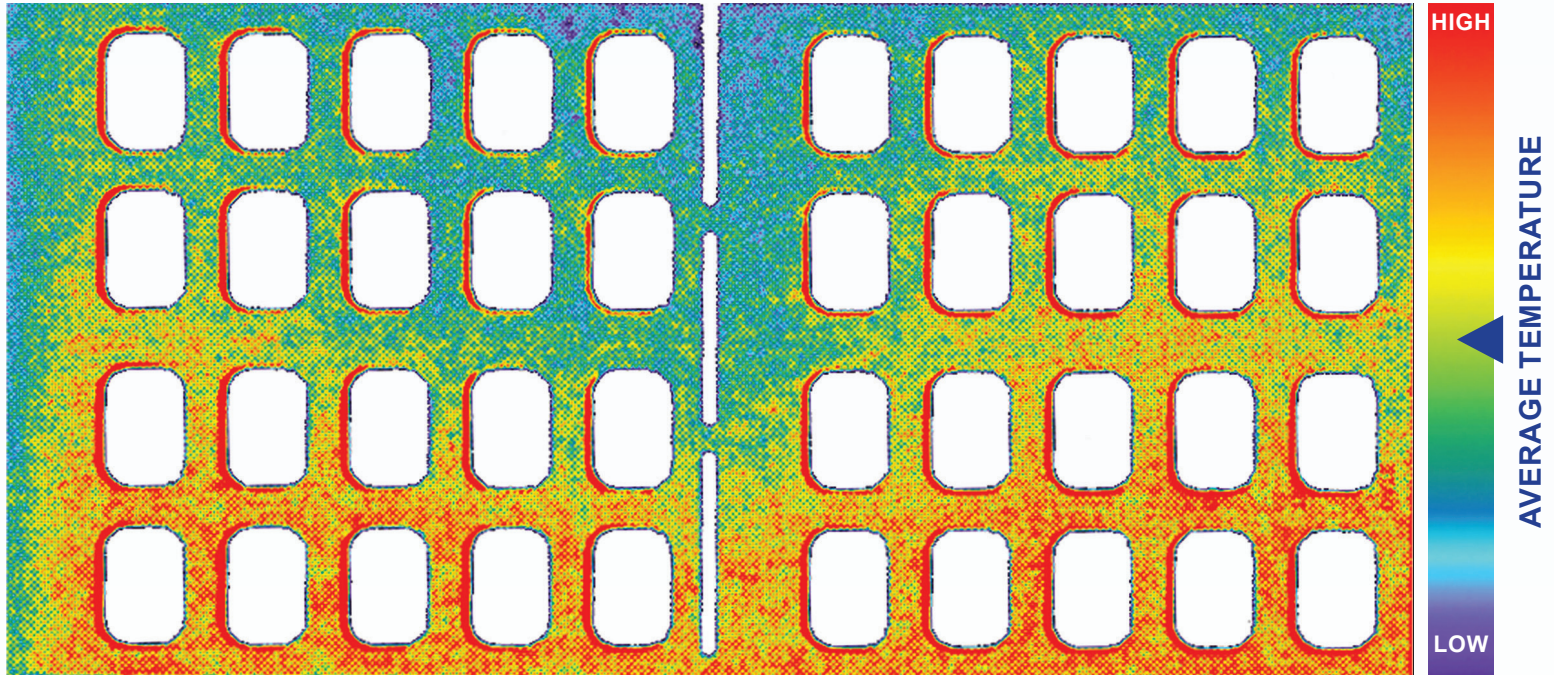


Example of color enhanced image generated from Thermex[®]



Temperature distribution after Topaq[®] analysis

CALL FOR A
FREE
SAMPLE



Thermex[®] is a unique temperature indicating material. As thin as a standard sheet of paper, Thermex[®] changes color to reveal relative temperature distribution between any two contacting surfaces. Upon exposure to temperature the

Thermex[®] sheet instantaneously and permanently changes color. The intensity of that color is directly related to the temperature it was exposed to, allowing Thermex[®] to spot high or low temperature zones. Thermex[®] is inexpensive, precise and disposable.

TACTILE PRESSURE EXPERTS



300 Madison Avenue
Madison, NJ 07940 USA
Phone: 1.973.884.1755
Fax: 1.973.884.1699
info@sensorprod.com

www.sensorprod.com

©2023 Sensor Products Inc.
Updated 01-18-2023

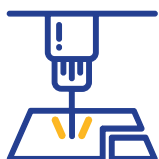
Example Areas of use



Form fill and seal machines



Lamination presses



Ultrasonic welding



Vacuum & Flat Web type machines

Normal minimum heat seal temperature

Low Density Polyethylene	245° F (118° C)
High Density Polyethylene	285° F (141° C)
Polypropylene	350° F (177° C)
Ionomer (Surlyn)	220° F (104° C)
Ethylene Vinyl Acetate Copolymer (12%)	200° F (93° C)
Ethylene Vinyl Acetate Copolymer (18%)	170° F (77° C)

Specifications

Temperature Range	200° F to 300° F (93° C to 149° C)
Dimensions	17 inches x 22 inches (43 cm x 55.8 cm)
Thickness	2 mil (0.05 mm)