

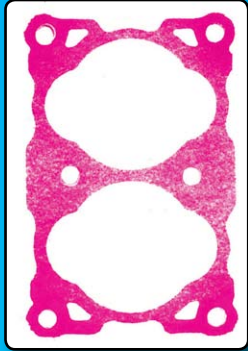


# Analyze Your Pressure Impressions

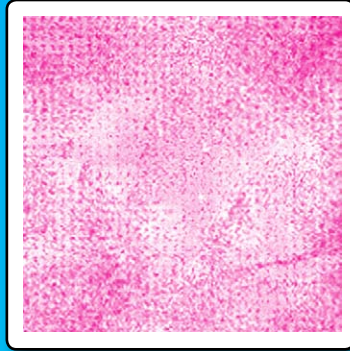
## BEFORE

## AFTER

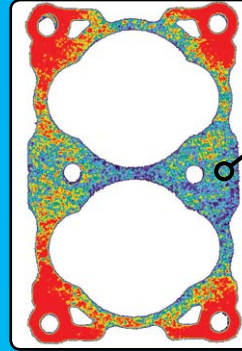
Bolted Joint



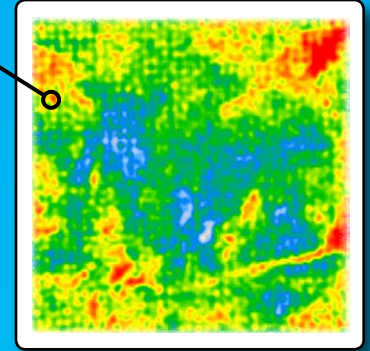
Heat Sink



Bolted Joint



Heat Sink

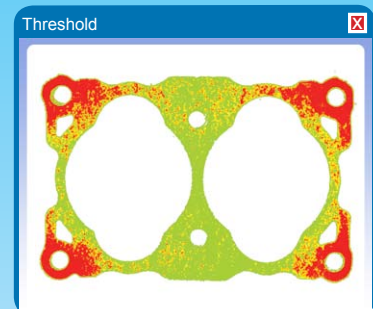
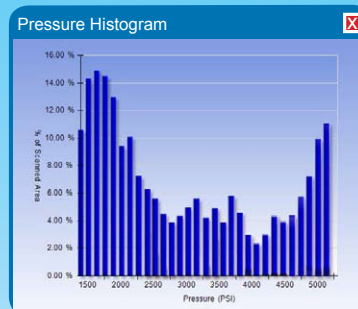
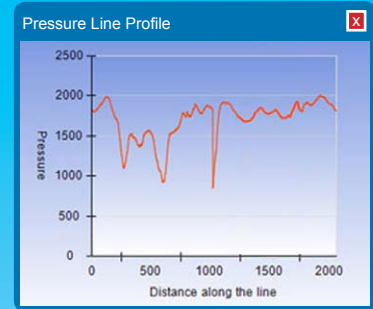
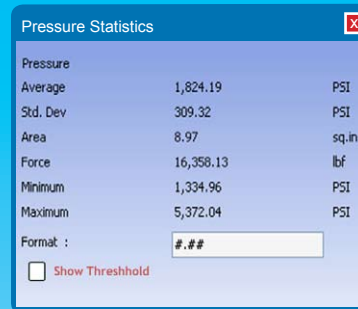


Need to obtain statistical data and enhanced digital visuals of your Fuji Prescale®/Pressurex® films?

Let our technicians analyze your pressure exposed impressions with the all new Topaq® Pressure Analysis System.

Topaq® enables a wealth of statistical information and high resolution detail to be extracted from your impression, greatly enhancing the value of the raw film alone. Now you can determine with a high degree of accuracy, total force, average pressure and total square inches of contact over your image area.

Additionally, Topaq® renders histogrammic and population statistics on user-defined regions of interest. Submitting your pressure-exposed films to us is simple and inexpensive.



### Benefits

- ◆ Allows you to obtain high resolution precise pressure maps that are visually powerful
- ◆ Obtain detailed statistical data that is otherwise unobtainable with just the naked eye or color correlation chart
- ◆ Integrate force and total contact area data that is only available with a Topaq® image analysis

### Service Pricing

Number of Images	Price per Analysis
1	\$90
2	\$75
3	\$65
4	\$55
5+	\$50

Prices based on 2 to 3 day turnaround. Overnight delivery is subject to a 15% surcharge.



Please be sure to include the following data with your film impressions:

1. Which film type used? \_\_\_\_\_
2. Approximate exposure time? \_\_\_\_\_
3. Approximate temperature? \_\_\_\_\_
4. Approximate relative humidity? \_\_\_\_\_