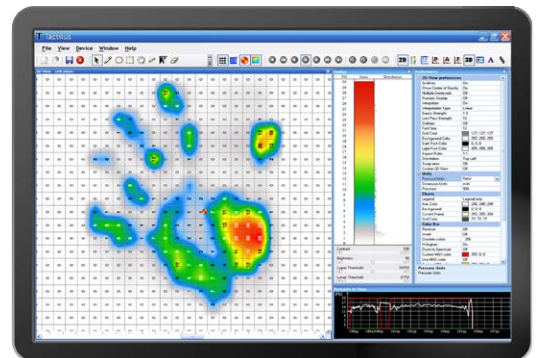


Imagine a surface sensor that **actually conforms to your surface...**

Now, for the first time, a **truly stretchable** tactile sensor!

Tactilus® Stretch brings a new level of functionality to the sensor world — a true stretch sensor where the entire sensor element actually stretches to conform to your surface. Two surfaces, especially those that are non-rigid, always create shear micro-impingements on the sensor, substantially reducing the validity and accuracy of data collected. With Tactilus® Stretch, the sensor moves where the two surfaces move, capturing every detail of pressure without sacrifice.

Tactilus® Technology: Tactilus® is a matrix based tactile surface sensor. Essentially it is an “electronic skin” that records and interprets pressure distribution and magnitude between any two contacting or mating surfaces and integrates the data collected into a powerful, yet user-friendly, Windows®-based tool kit. Each Tactilus® sensor is carefully assembled to exacting tolerances and individually calibrated and serialized. The architectural philosophy of Tactilus® is modular, allowing for portability, easy expansion, and simultaneous data collection from up to 6 discrete sensor pads. Tactilus® employs sophisticated mathematical algorithms that intelligently separate signal from noise, and advanced electronic shielding techniques to maximize environmental immunity to noise, temperature and humidity. Our proprietary sensor design ensures the most robust sensor in the industry - an investment that will sustain thousands of uses.



Tactilus® software reveals surface contact pressure distribution

SPECIFICATIONS

TECHNOLOGY	Piezoresistive
SURFACE PRESSURE RANGE	0 - 30 PSI (0 - 2.1 kg/cm ²)
ARRAY SIZE	Multiple lined sensor elements
SENSING POINTS	1,024
PHYSICAL SENSING AREA	Custom
SCAN SPEED	Up to 90 Hz
SPATIAL RESOLUTION	Custom from 0.63 in (1.6cm)
THICKNESS	27.6 mils (0.7 mm)
NEW ELASTICITY	120% or 158% stretchability levels available
ACCURACY	± 10%
REPEATABILITY	± 2%
HYSTERESIS	± 5%
NON-LINEARITY	± 1.5%



Tactilus® Stretch in action