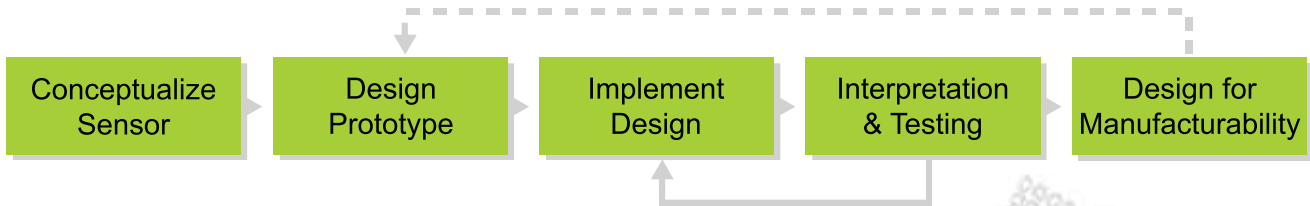


Prototype Development

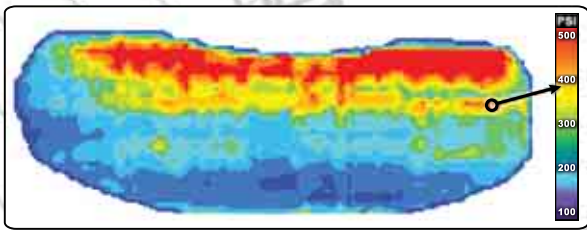
Concept to Deliverable Process



*"We partner with you, the client. **YOUR NEEDS** are what we adapt our sensors to conform to. This is an old fashioned tradition that is uncommon in today's technology world."*
 ~ Jeffrey G. Stark, R&D Director

Technology: Sensor Products is a world leader in the design and manufacturer of tactile surface sensors. A myriad of manufacturing, assembly and OEM components within a product require the measurement of surface pressure distribution, alignment and general surface topography. Our tactile sensors create a 3D topographical map that quickly illuminates where the high and low pressure spots are occurring in your application or device. Sensor Products is a true integrator. Tailoring electronics, sensor element and all software to clients' specific needs. Our software is a toolkit that offers the ability to seamlessly integrate with our clients control software.

Our Team: Sensor Products has a highly dedicated team of talented engineers with 25 years of combined experience in the niche discipline of tactile surface sensing. Your project will be supervised by a product manager who will be your direct contact, and worked upon by our staff which consists of material, mechanical, and PHD level electrical engineers.



Characterization of surface pressure profile across a brake pad

"I manage a materials testing laboratory at Colgate-Palmolive. Last year I was challenged to measure the force being placed on packaging used for one of our leading products. I discovered the Tactilus product line and discussed my needs with the applications staff at SPL. Subsequently, our engineers have been collecting data which is proving very useful toward solving our packaging problem."
 ~ Todd Van Gordon, Colgate Palmolive

SPL Has Design Experience in the Following Areas:

- Biomechanics + Prosthetics
- Bolted Joints + O-Rings
- Composite Layups
- Heat Sink Assessment
- Fuel Cells
- Human Body/Ergonomics
- Impact Measurements
- LCD Bonding
- Medical Devices
- Nip Rollers
- Heat Sealing
- PCB Lamination
- Squeegees, Wipers & Doctor Blades
- Tire Tread Footprints
- Wafer Polishing

TECHNICAL PARAMETERS

Technologies	Resistive, Capacitive, Piezoresistive, Fiber Optic
Temperature Range	0° to 350°F (18° to 177°C)
Pressure Range	0 to 2,000 PSI (0 to 140 kg/cm ²)
Max Query Rate	Up to 1,000 hz.
Thickness	From 0.3 mm
Spatial Resolution	From 0.5 mm
Max Sensor Array	256 x 256 lines