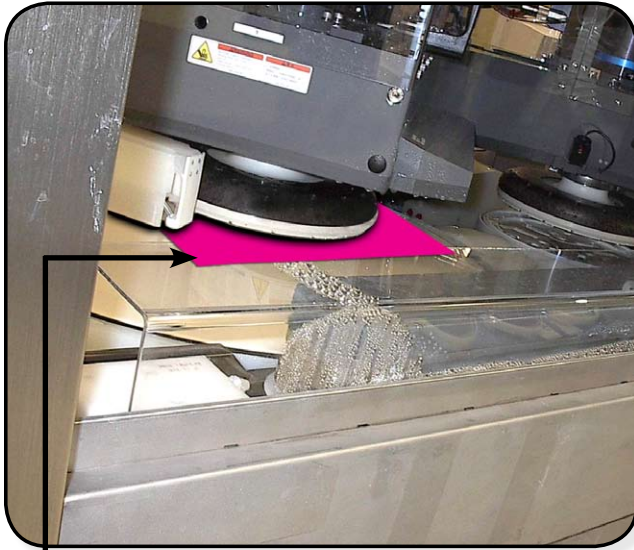


How Fujifilm Prescale® is Used

Wafer Polishing

1

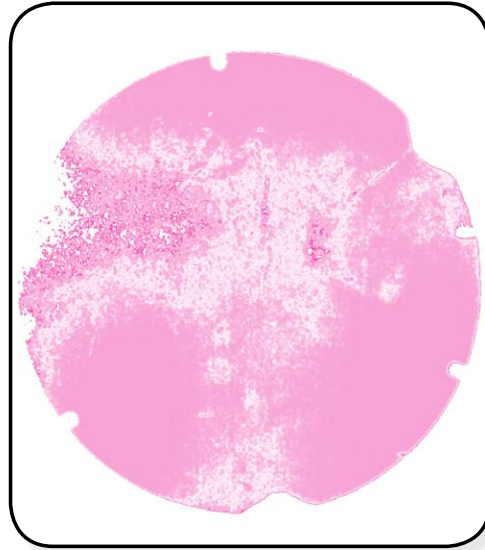
Place a sheet of Fujifilm Prescale® pressure indicating film directly on the compression elements of your polishing head and wafer component.



Place Fujifilm Prescale® tactile surface sensor here

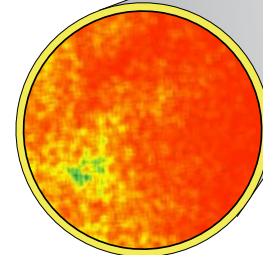
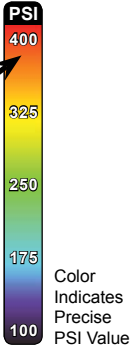
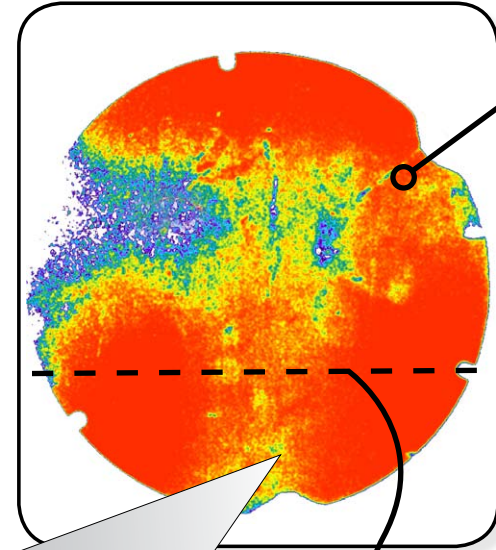
2

Instantaneously and permanently the film captures both the pressure distribution and magnitude that occurs between the contacting surfaces.



3

Final analysis: a "pressure map"



Zoomed View

