

Pressurex® reveals the pressure distribution and magnitude between contacting or impacting surfaces.

Pressurex Zero® is our newest addition to the Pressurex® line. Now you can characterize surface pressure down to an unbelievable 7.2 PSI (0.5 kg/cm²)!

Simply place Pressurex® pressure indicating sensor film between any two surfaces that touch, mate or impact. Apply pressure, remove it and immediately the film reveals the pressure distribution profile that occurred between the two surfaces. Conceptually similar to Litmus paper, the color intensity of Pressurex® is directly related to the amount of pressure applied to it. The greater the pressure, the more intense the color. The Color can be visually compared to our color correlation chart or scanned and quantified with one of our optional optical imaging systems.

Pressurex Zero® is extremely thin (8 mils) which enables it to conform to curved surfaces. It is ideal for invasive intolerant environments and tight spaces not accessible to conventional electronic transducers.

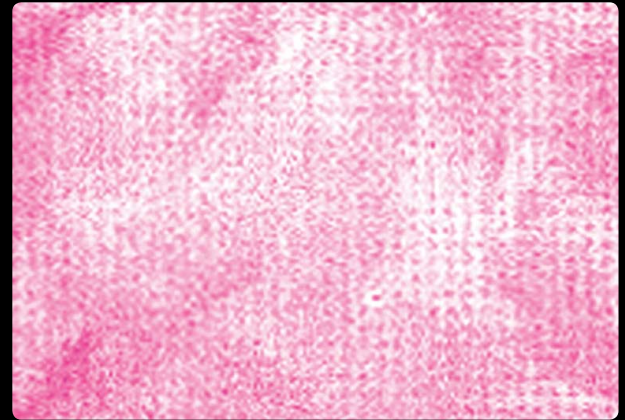
COMMON APPLICATIONS INCLUDE

- Heat sink / PCB's
- Lamination presses
- Roller pressure
- Squeegee pressures
- Wafer polishing
- Flow check for fuel cell stacks
- Winding pressure for high performance films

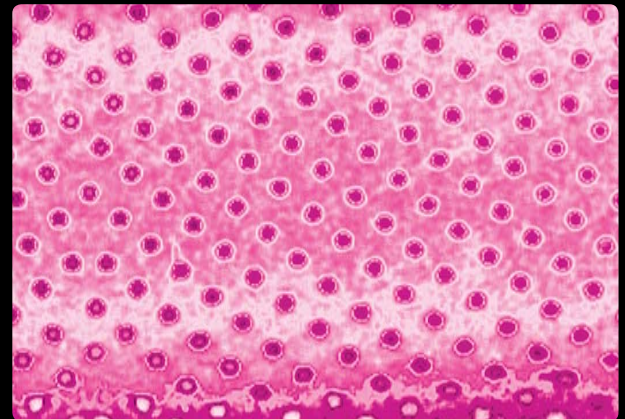
PHYSICAL SPECIFICATIONS

PRESSURE RANGE	7.2 to 28 PSI (0.5 to 1.97 kg/cm ²)	ROLL SIZE	9.8 ft x 12.2 in (3 m x 310 mm)
OPERATING TEMPERATURE	41 to 95°F (5 to 35°C) <i>(much higher for brief exposure)</i>	SUBSTRATE	Polyethylene Terephthalate (PET)
HUMIDITY RANGE	20 to 90% RH	ACCURACY	±10% visual, ±2% utilizing optional optical measurement systems
GAUGE	8 mils	SHELF LIFE	2 years
SPATIAL RESOLUTION	5 to 15 microns		

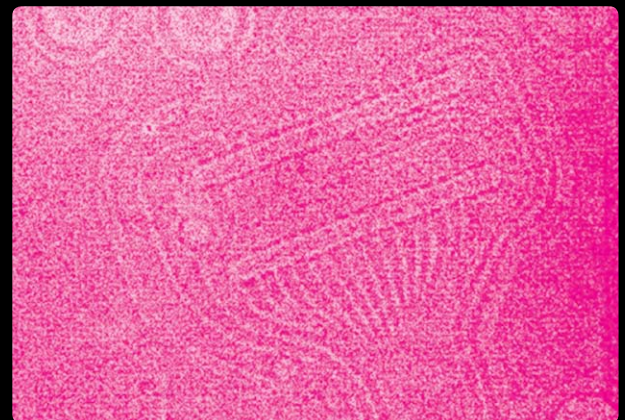
MSDS Available Upon Request.



HEAT SINK



NIP IMPRESSION



LAMINATION PRESS

TACTILE PRESSURE EXPERTS



SENSOR PRODUCTS INC.

Sensor Products Inc.

300 Madison Avenue
Madison, NJ 07940 USA
Phone: 1.973.884.1755
Fax: 1.973.884.1699
info@sensorprod.com

www.sensorprod.com

©2010 Sensor Products Inc.
Updated 07-16-10